

- Centralized storage and management of access policies
- Authentication and authorization of network users via 802.1X (RADIUS)
- Authentication and authorization of network device administrators via TACACS+
- Interaction with external identification sources MS AD and LDAP
- User segmentation based on location, type of equipment being connected, or other attributes
- MAC Authentication Bypass
- Profiling based on MAC-OUI or DHCP
- Active-Active redundancy support
- Support for licensing with Online/Offline ELM (demo-mode available)



## Network Access and Information Control Engine

Eltex-NAICE (Network Access and Information Control Engine) is a system for managing access to corporate networks and devices. The system is managed using a modern web-interface. NAICE is designed for centralized management of user access policies for wired and Wi-Fi networks.

NAICE is a multi-vendor solution that supports interaction via RADIUS, TACACS+ protocols.

## Authentication and authorization

NAICE integrates authentication, authorization and profiling services into a single platform. The system identifies and categorizes devices and provides the right level of access.

## RADIUS protocol

This protocol is used for authentication, authorization and accounting. RADIUS server operates with the user database that contains authentication data for each user. RADIUS protocol provides additional protection when accessing network resources.

## TACACS+ protocol

TACACS+ protocol is designed for authentication and authorization of network device administrators. It allows for authentication in order to grant new privileges (enable) and authorization of each command executed on a network device. All TACACS+ events can be transmitted to Syslog server.

## MS Active Directory and LDAP server

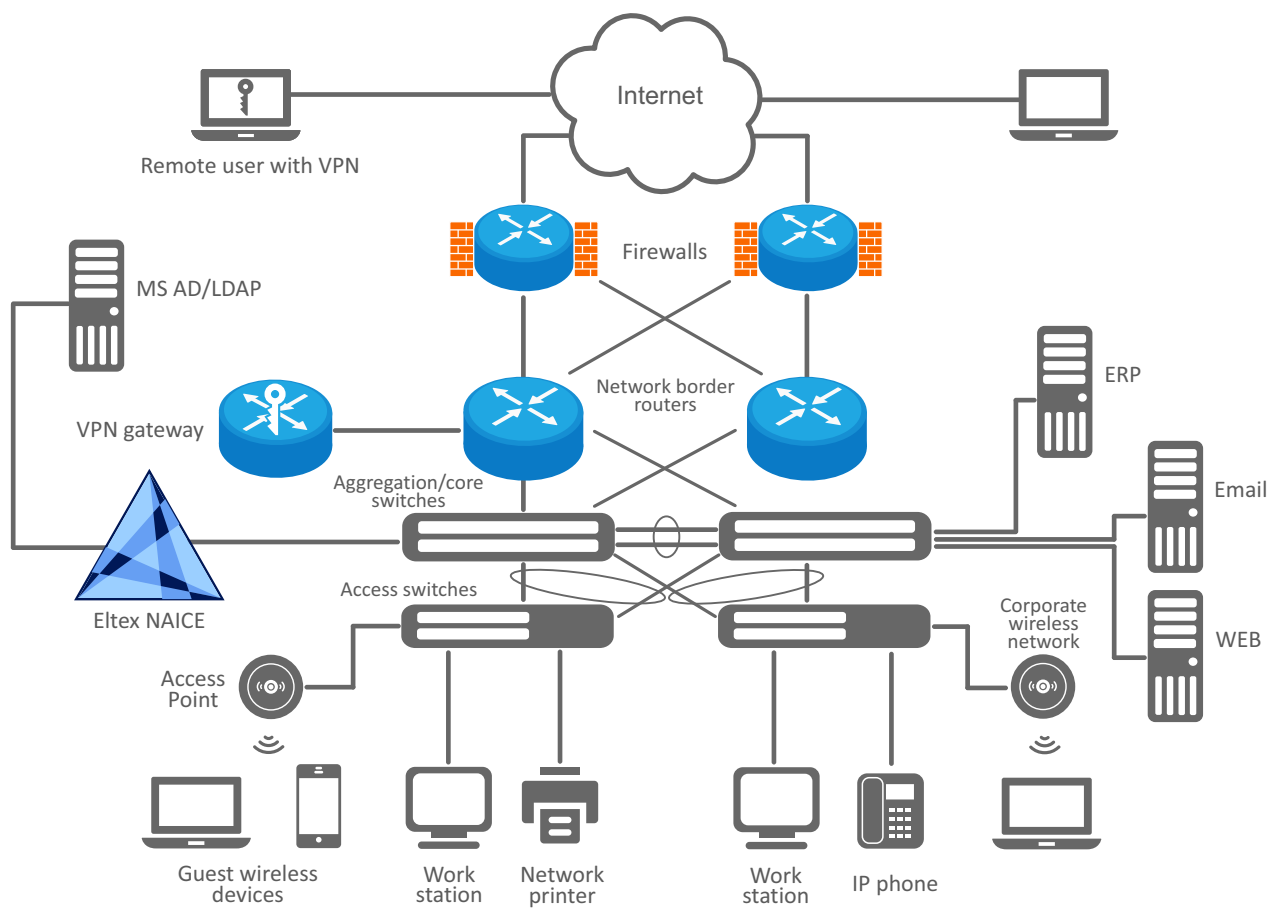
NAICE is integrated with the user database, their attributes and groups from/to Microsoft Active Directory (MS AD) and LDAP<sup>1</sup>.

## Features and capabilities

- |   |   |
|---|---|
| <ul style="list-style-type: none"><li>– Identification, authentication, authorization of users and administrators, rights assignment according to group or role membership</li><li>– Registration of access events</li><li>– Profiling of devices connected to the network</li><li>– Centralized storage and management of access policies</li><li>– Authentication and authorization of network users based on 802.1X policies: EAP-PEAP, PAP, MSCHAPv2</li><li>– Support for TACACS+ protocol</li></ul> | <ul style="list-style-type: none"><li>– Integration with MS Active Directory (MS AD) and LDAP</li><li>– User segmentation</li><li>– MAB authorization and basic profiling</li><li>– Support for EAP-TLS protocols (certificate-based authorization)</li><li>– Support for Astra Linux 1.7.5 / 1.7.6 / 1.8.1</li></ul> |
|---|---|

<sup>1</sup> LDAP support has limitations.

Use case



Ordering information

Name	Description
NAICE	NAICE (Network Access and Information Control Engine) Eltex

Contact us

About Eltex

+7 (383) 274 10 01  
+7 (383) 274 48 48

eltex@eltex-co.ru

www.eltex-co.com

**Eltex** Enterprise is a leading Russian developer and manufacturer of communication equipment with 30 years of history. Complete solutions and their seamless integrability into the Customer's infrastructure are the priority growth areas of the company.