

- Centralized storage and management of access policies
- Authentication and authorization of network users via 802.1X (RADIUS)
- Authentication and authorization of network device administrators via TACACS+
- Interaction with external identification sources MS AD and LDAP
- User segmentation based on location, type of equipment being connected, or other attributes
- MAC Authentication Bypass
- Guest network access control (Captive Portal)
- Profiling based on MAC-OUI or DHCP
- Active-Active redundancy support
- Support for licensing with Online/Offline ELM (demo-mode available)



Network Access and Information Control Engine

Eltex-NAICE (Network Access and Information Control Engine) is a system for managing access to corporate network resources. NAICE is designed for centralized management of user access policies for wired and Wi-Fi networks and equipment. The system is managed using a modern web-interface.

NAICE is a multi-vendor solution that supports interaction via RADIUS, TACACS+ protocols.

Authentication and authorization

NAICE integrates authentication and authorization services into a single platform. The system identifies and categorizes devices and provides them with the right level of access. NAICE provides a guest network access service (Captive Portal) for public Wi-Fi networks. User authentication is available both via SMS and via accounts from external identity sources (MS AD, LDAP) or a local database. To comply with the corporate style, there is a built-in portal authorization web page designer.

RADIUS protocol

This protocol is used for authentication, authorization and accounting. RADIUS server operates with the user database that contains authentication data for each user. RADIUS protocol provides additional protection when accessing network resources.

TACACS+ protocol

TACACS+ protocol is designed for authentication and authorization of network device administrators. It allows for authentication in order to grant new privileges (enable) and authorization of each command executed on a network device. All TACACS+ events can be transmitted to Syslog server.

MS Active Directory and LDAP server

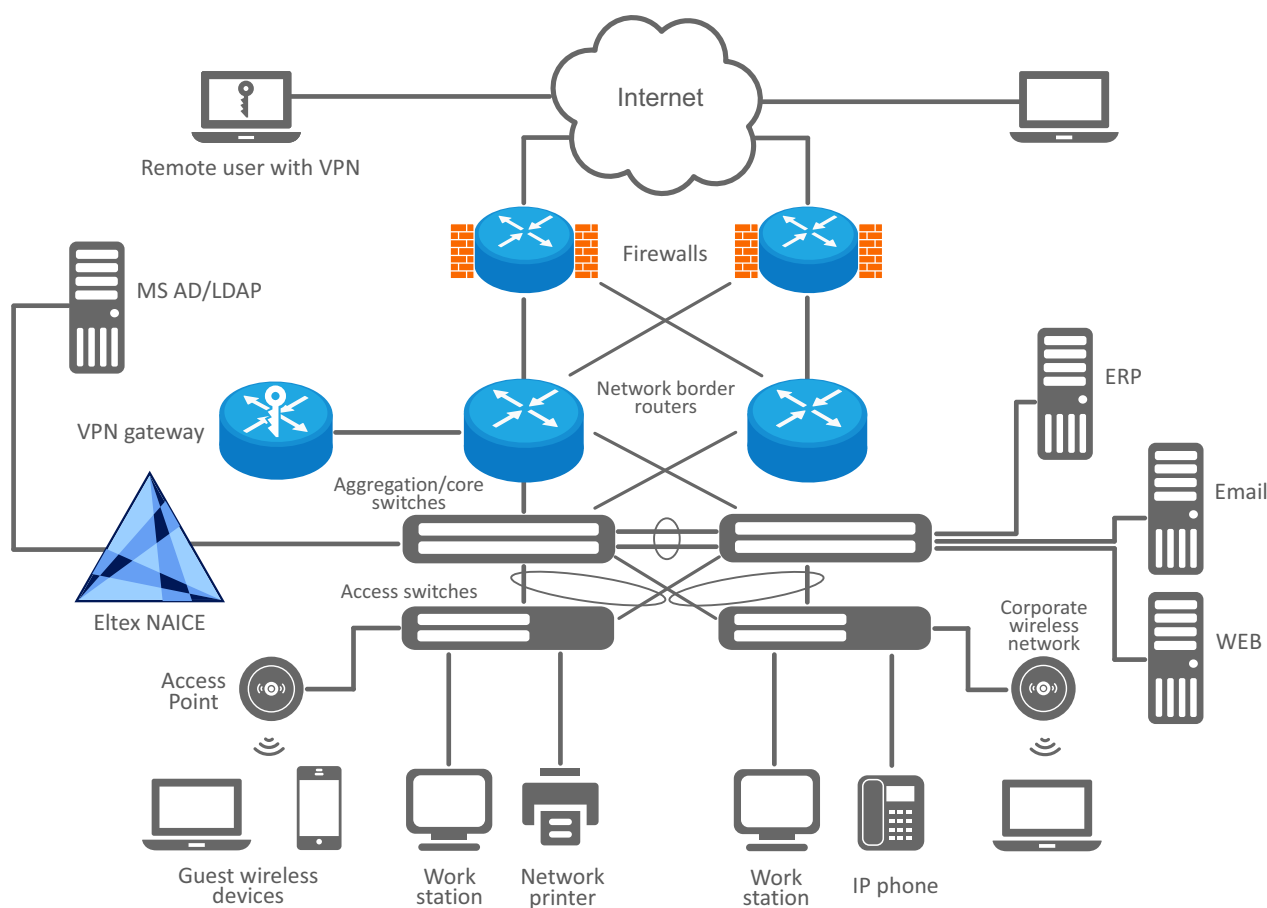
NAICE is integrated with the user database, their attributes and groups from/to Microsoft Active Directory (MS AD) and LDAP¹.

¹ LDAP support has limitations.

Features and capabilities

- Identification, authentication, authorization of users and administrators, rights assignment according to group or role membership
- Registration of access events
- Profiling of devices connected to the network
- Centralized storage and management of access policies
- Authentication and authorization of network users based on 802.1X policies: EAP-PEAP, PAP, MSCHAPv2
- Support for TACACS+ protocol
- Integration with MS Active Directory (MS AD) and LDAP
- User segmentation
- MAB authorization and basic profiling
- Support for EAP-TLS protocols (certificate-based authorization)
- Guest network access control (Captive Portal) via SMS registration or using accounts from local DB, MS AD or LDAP
- Support for Astra Linux 1.7.5 / 1.7.6 / 1.8.1

Use case



Ordering information

Name	Description
NAICE	NAICE (Network Access and Information Control Engine) Eltex

Contact us

+7 (383) 274 10 01
+7 (383) 274 48 48

eltex@eltex-co.ru

www.eltex-co.com

About Eltex

Eltex Enterprise is a leading Russian developer and manufacturer of communication equipment with 30 years of history. Complete solutions and their seamless integrability into the Customer's infrastructure are the priority growth areas of the company.